

We have a Winner!

NCA is a 501.c.3 Non-Profit Dedicated to the appreciation and understanding of the arts, the encouragement of new artists, and promotion of art interests throughout the community. **Donations are tax deductible.**

Our goal is to provide a comfortable environment in which artists can learn and benefit from each other's skills, knowledge, and methods.

Welcome All

Attending our meetings is a great way to meet fellow artists – bring a painting or two for a friendly critique. Monthly demos are given by some of the best Portland area artists and make for a great learning experience!

Inside this issue:

<i>President's Message</i>	2
<i>Workshop</i>	2,4
<i>Critique photos</i>	3
<i>Article by Member Shirlee Lind</i>	4
<i>Contacts, Comfort Corner</i>	5
<i>Revolving Art</i>	1
<i>Know Your Brushes</i>	6

Sherry Joiner poses with her first prize blue ribbon winning painting from the Multnomah County Fair in 2020.

Multnomah County Fair usually opens in May and the art exhibits respect the veterans, men and women in uniform and people who serve. The art show is a memorial to them but can be other subjects. Last year the Fair was cancelled in May because of COVID and held on October 15 as a Modified fair. Contestants, judges, public masking and social distancing. I was invited to the show to enter my paintings because my city boundaries are between Multnomah County and Clackamas County. I have entered there before. I entered my painting I called, "The Dawn's Early Light," for the Theme of patriotism. I won a blue ribbon, for first place.



Sherry Joiner

Revolving Art— Show your art

The Guild looks for opportunities to show our members' art. Contact us if you have a location where you would like us to show.

Please contact: Betty Kellogg at 503-659-8284 or bwt.kellogg@comcast.net

Our members currently show regularly at the following locations:

- Oak Lodge Water Services District (14-16 paintings)
- Gladstone DMV (5 paintings)



Betty Kellogg
NCAG President

Workshops are so inspirational, truly a great value and learning resource. Access to other artists and differing views expands our thinking

Workshops are currently on hold, under the same terms as our other gatherings. If you want to teach a class using Zoom, please contact Char Tritt, and we will try to put it together.

We are always on the lookout for ideas for demos and work-shops to keep our members inspired. Please let us know if you have a skill you want to share, or if you want to see something or someone in particular.

Membership Options

Join or renew your membership online with PayPal or debit/credit card. As always also join at a meeting or send your payment to Treasurer at North Clackamas Arts Guild, PO Box 220004, Milwaukie OR. 97269-0004

President's Message

Hello everyone.

It has been wonderful to get responses from so many of you regarding the changes we are trying to make to the newsletter. Thanks to Shirlee and Barbara for their contributions this month. Looking for more !

We have received 5 responses to the survey we sent out, and we could use some more! If you just want to call me to talk about it, that is ok too. If the sun is out, I may be out for a walk, but if it is raining, I'll be right here. If you have an idea for something to write, I'd love to talk about it—the scope is small, so it should be something fun to do.

We should be thinking (out loud) about the next year for the Guild. The Board has been trying to keep everyone advised of all changes that affect us, and I feel like I nag you for pictures and dues, but I believe both are worthy. With developments in vaccination availability, we can look forward to getting together again in a few months. This is our traditional time of year to elect new officers for the coming year. Anyone who is willing to step forward and volunteer to run for an office, please contact me. Stay well, and I'll enjoy seeing you soon.
Betty Kellogg, NCAG President

Workshops

Unless otherwise noted workshops start at 10am and end at 3pm. Details and materials lists will be provided as available.

- **Minimum of 7 students to hold workshop.
- **Workshop Fees must be pre-paid to reserve your space!
- **Payments: Cash, check made out to NCAG, collected by Treasurer or designated person.
- **If mailing your payment it must be received by the meeting date prior to the workshop.

Register at

- NCAG Meetings or
- Char Tritt
- 971-570-5782

Cost (May vary)

- Member \$20
 - Non member \$30
- Cash or check only.*

Paint4Fun

We will resume our monthly free paint days at King of Kings Lutheran Church when we are free to meet there. If warm weather returns first, we will try plein aire.

Critiques Due to time & space constraints please limit to 1-2 paintings



Lee Marletto



Kate Mitchell



Shirlee Lind



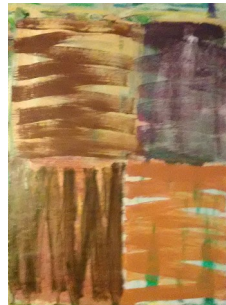
Shirlee Lind



Jaci Sanks



Kate Mitchell



John Kellogg



John Kellogg



Diana Strom



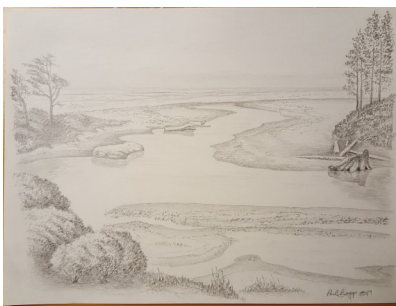
Diana Strom



Rita Townley



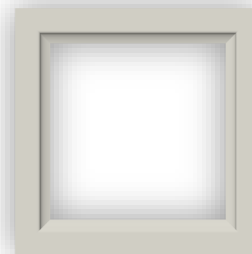
Sherry Joiner



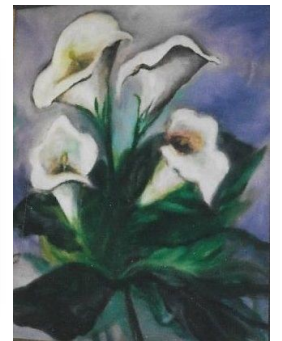
Paul Boggs



Betty Kellogg



Yours?



Sherry Joiner



Two Horses by Shirlee Lind

I have accomplished many painting projects since the pandemic began, but not all on canvas. I would like to submit something about the Christmas Bulb orders I did in Nov. and the day up to Christmas!

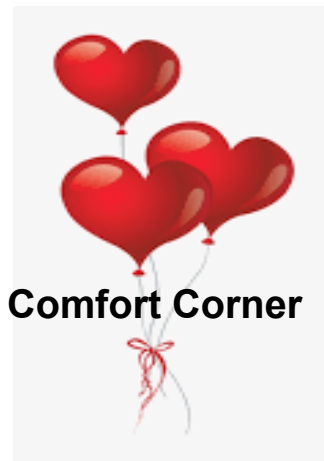
I painted over 50 bulbs of peoples animals from roosters to many horses, cats and of course dogs too. I made Christmas very special for many with all of the virus going on. Many wrote to me and told me I was a saint painting their beloved animals some deceased that actually made them cry. I painted from 6 to 12 orders per person, not just one bulb orders! My art room was like Santa's workshop! Bulbs with customers orders took up my entire room! I painted the portraits in oils and used acrylic back grounds with various glitter products to add the Christmas atmosphere. I have already started orders for Christmas 2021.

I also painted several canvas orders too and not to mention horses on wedge pieces from cut trees. I can actually say this was a very blessed Holiday for me, touched by all for loving my work. I feel so thankful for touching so many hearts in this difficult time of our lives. I only hope I can continue this project through 2021. I have missed teaching my classes and this has certainly help fill the void! I also miss everyone in the Guild.

Also by Shirley Lind



If you would like to submit an article and photos for future newsletters, please advise one of your Board members.



Comfort Corner

If you know of a member who's ailing or in need, please let us know. Contact Connie Emmons at 503-454-0447



NCAG Contact Information

Officers 2019-2020 April through March				
Betty	Kellogg	President	(503) 659-8284	bwt.kellogg@comcast.net
Kate	Mitchell	Vice President	(503) 894-3275	kpmitchell@gmail.com
Shawn	Van Doren	Secretary	(503) 348-9265	shawnuf@comcast.net
Paul	Boggs	Treasurer	(503) 659-0849	boggs3858@comcast.net
COMMITTEES				
		Advertising		VOLUNTEER NEEDED
Gary	Michael	Critique	(503) 659-9116	
Pam	Davis	Critique (Alt)	(971) 219-1962	
Char	Tritt	Demos	(971) 570-5782	
Sharon	Payne	Historian	(503)654-5613	
		Hospitality		
		Hospitality		
Liz	Flintjer	Membership	(503) 655-5762	
Betty	Kellogg	Newsletter	(503) 659-8284	bwt.kellogg@comcast.net
		Newsletter		VOLUNTEER NEEDED
Jerry	Schmidt	PR	(503) 557-9653	
		Revolving Art		VOLUNTEER NEEDED
Shawn	Van Doren	Website, Bios	(503) 348-9265	shawnuf@comcast.net



Kate Mitchell

Please accept our heartfelt sympathy for any lost friends or loved ones during the current outbreak of COVID-19 virus, or for any reason. These losses are hard to bear, and we want you to know that you are in our hearts.

Spring is headed our way!

We have had a strong test of wills and skills at surviving everything thrown at us this winter. We will resume meeting when we hear news from the county about changes in infection levels, and once our members start getting vaccinated.



Diana Strom



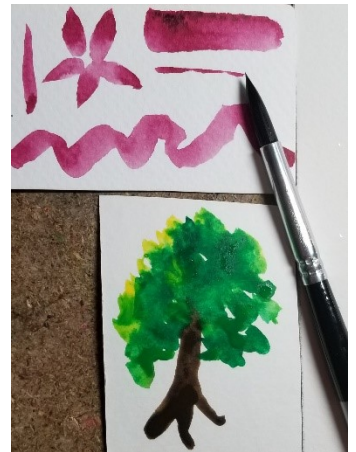
Types of brushes

Know Your Brushes

--First of a Series-- by Barbara Seliner

There is no rule about which brush is the best to use. It's truly is personal preference! Which one feels the best to you? If you can paint everything the way you want it with just one brush, then you don't need a variety of brushes. However, we are going to look at each of the different types of brushes, so that when you go to an art store and see different types of brushes, you'll know what you're looking at, or maybe if get you stuck or unhappy with our paintings, sometimes just trying a new kind of brush can bring the fun back into our painting sessions and knowing a little more about our tools help. Be aware that I am primarily a watercolorist, but many of the same principles will apply to acrylic and oils.

The most used brushes for fine art painting are the ROUND and the FLAT brush. Each brush was developed to do specific strokes. The ROUND brush is so versatile you don't think of changing brushes while painting. It is great for drawing and adding detail.



The FLAT brush design allows a wide stroke that will turn into a thin line by twisting and lightening the pressure as the brush lifts up on its chiseled edge. Also try a double load, one color on the right corner and another color on the left corner. The water will blend colors when pressure is applied to brush. The Flat brush is great for spreading paint quickly and evenly over a larger surface laying down a wash or glaze.