

## Historian's News

**NCAG** is a 501.c.3 Non-Profit Dedicated to the appreciation and understanding of the arts, the encouragement of new artists, and promotion of art interests throughout the community. **Donations are tax deductible.**

Our goal is to provide a comfortable environment in which artists can learn and benefit from each other's skills, knowledge, and methods.

Sharon Payne, Guild Historian, was contacted a few months ago by the family of Norma Schneider, who was the founder of North Clackamas Arts Guild. They had art of Norma's and wanted to donate the items to the guild. The donation includes matted prints, and note cards of her works, many in plastic sleeves. There are also many photographs of her art along with many prints for reference use. She loved to paint in watercolor and acrylics of older homes, churches, buildings, flowers and fruits. The Guild Board will decide at a later date about how to distribute these items.

The Baker Cabin and Church in Clackamas County were popular subjects, located near Carver where Horace & Jane Baker ended their travel West from Illinois in the second wagon train from Independence, Missouri in 1846, and the first group to cross the Barlow Trail to Oregon.

### Welcome All

Attending our meetings is a great way to meet fellow artists – bring a painting or two for a friendly critique. Monthly demos are given by some of the best Portland area artists and make for a great learning experience!

### Inside this issue:

|   |     |
|---|-----|
| <i>President message</i>                  | 2   |
| <i>Workshop</i>                           | 2,4 |
| <i>Critique photos</i>                    | 3   |
| <i>Article by Member<br/>Kathy Conrad</i> | 4   |
| <i>Contacts, Comfort Corner</i>           | 5   |
| <i>Revolving Art</i>                      | 5   |



Cherries (L)  
Baker Church (R)  
Paintings by  
Norma Schneider



Sharon has also been following the work by Clackamas County on the Concord School building on SE Concord Avenue, between SE Oatfield and SE McLoughlin. The building is owned by the North Clackamas Parks & Recreation Department, and they are making plans/designs to park and building for community use. They will be done in 2022, and we will see if it might be a new home for NCAG! For further info check their website at <https://ncprd.com/Concord>

### Membership Renewals Due January 1st

Treasurer, Paul Boggs, is collecting \$30 membership renewals for 2021. Pay by check made out to NCAG mailed to the PO Box 220004, Milwaukie, OR 97269, or go to [www.ncartsguild.com](http://www.ncartsguild.com) to pay online.



Betty Kellogg  
NCAG President

**Workshops are so inspirational, truly a great value and learning resource. Access to other artists and differing views expands our thinking**

Workshops are currently on hold, under the same terms as our other gatherings. If you want to teach a class using Zoom, please contact Char Tritt, and we will try to put it together.



**Sorry, this artist is no longer available.**

## President's Message

Hello everyone.

Long time, no see! I can't get any indication of how we stand with a restart of meetings in our county. We will be "on it" as soon as we know anything.

With all of the upheaval with vaccinations and staying safe with mask wearing and protecting personal space, it might be easy to think that nothing was going on with the Guild. That would be incorrect. We have gained 2 new members, and continue to offer Rotating Art display to those requesting it.

As mentioned in our last newsletter, the Board has been processing a grant of funds to keep us in good financial shape while we are unable to meet, and some donations to fill out our sale proceeds when we are able to have a show and/or sale. So, we have suffered no financial loss, even though we are protecting our meeting space. Your dues have not been keeping an empty building warm! We are also keeping an eye on the future, with the donation of art supplies we received from the Estate of Ed Thibideau, and the prints we received from Norma Schneider's estate.

**Paint!** We need more pictures of your lovely work to fill our pages!

## Workshops

*Unless otherwise noted workshops start at 10am and end at 3pm. Details and materials lists will be provided as available.*

\*\*Minimum of 7 students to hold workshop.

\*\*Workshop Fees must be pre-paid to reserve your space!

\*\*Payments: Cash, check made out to NCAG, collected by Treasurer or designated person.

\*\*If mailing your payment it must be received by the meeting date prior to the workshop.

### Register at

- NCAG Meetings or
- Char Tritt  
971-570-5782

### Cost (May vary)

- Member \$20
- Non member \$30

*Cash or check only.*

We are always on the lookout for ideas for demos and work-shops to keep our members inspired. Please let us know if you have a skill you want to share, you want to see something or someone in particular.

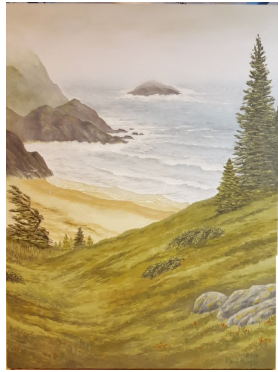
## Membership Options

Join or renew your membership online with PayPal or debit/credit card. As always also join at a meeting or send your payment to Treasurer at North Clackamas Arts Guild, PO Box 220004, Milwaukie OR. 97269-0004

### Paint4Fun

We will resume our monthly free paint days at King of Kings Lutheran Church when we are free to meet there. If warm weather returns first, we will try plein aire.

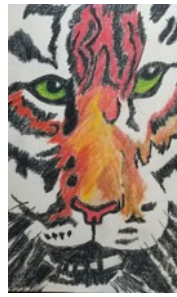
**Critiques *Due to time & space constraints please limit to 1-2 paintings***



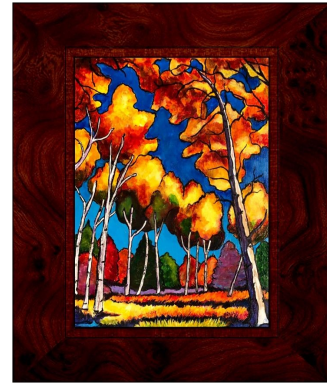
**Paul Boggs**



**Betty Kellogg**



**Barbara Seliner**



**Kathy Conrad**



**Sherry Joiner**



**Sherry Joiner**



**John Kellogg**



**John Kellogg**



**Lee Marletto**



**Lee Marletto**



**Vona Adams-Lawrence**



**Vona Adams-Lawrence**



**Pam Davis**



**Rita Townley**



**Rita Townley**



## The Traveling Artist

by Kathy Conrad

Whether it be short- or long-term, traveling as an artist is a challenge ... what to bring, how much to bring, and how to stow it while on the road.

In-store and on-line art supply sources offer the same portable systems. Often, though, these expensive systems do not meet a traveling artist's needs.

An unconventional yet practical portable art supply system is a construction toolbox. Home Depot offers a variety of durable, heavy gauge constructed resin/plastic toolboxes.

Another tool for the traveling artist's toolbox is a clear, plastic mailing tube to hold brushes. The tube with an easy to remove lid can be ordered in several sizes from eBay. Length can be further adjusted with a serrated knife.

Quality, price, and utility make these portable systems a good alternative to conventional ones. Just remember, the more you put in, the more it weighs.

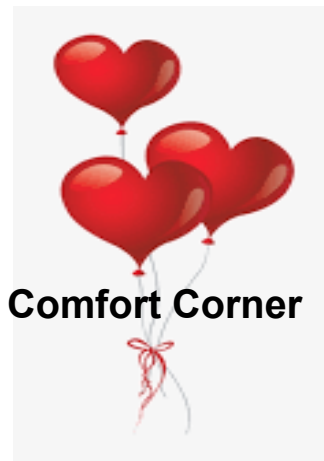
Two smaller toolboxes is another option.

Photos depict a 26-inch Husky toolbox.



Kathy Conrad has given us a close look at her organized toolbox.  
Husky brand, Home Depot

*If you would like to submit an article and photos for future newsletters, please advise one of your Board members.*



**Comfort Corner**

If you know of a member who's ailing or in need, please let us know. Contact Connie Emmons at 503-454-0447



# NCAAG Contact Information

| Officers 2019-2020 April through March |           |                |                |  |
|--|-----------|----------------|----------------|--|
| Betty                                  | Kellogg   | President      | (503) 659-8284 | <a href="mailto:bwt.kellogg@comcast.net">bwt.kellogg@comcast.net</a> |
| Kate                                   | Mitchell  | Vice President | (503) 894-3275 | <a href="mailto:kpitchell@gmail.com">kpitchell@gmail.com</a>         |
| Shawn                                  | Van Doren | Secretary      | (503) 348-9265 | <a href="mailto:shawnuf@comcast.net">shawnuf@comcast.net</a>         |
| Paul                                   | Boggs     | Treasurer      | (503) 659-0849 | <a href="mailto:boggs3858@comcast.net">boggs3858@comcast.net</a>     |
| COMMITTEES                             |           |                |                |  |
|  |           | Advertising    |                |  |
| Gary                                   | Michael   | Critique       | (503) 659-9116 |  |
| Pam                                    | Davis     | Critique (Alt) | (971) 219-1962 |  |
| Char                                   | Tritt     | Demos          | (971) 570-5782 |  |
| Sharon                                 | Payne     | Historian      | (503)654-5613  |  |
|  |           | Hospitality    |                |  |
|  |           | Hospitality    |                |  |
| Liz                                    | Flintjer  | Membership     | (503) 655-5762 |  |
| Betty                                  | Kellogg   | Newsletter     | (503) 659-8284 | <a href="mailto:bwt.kellogg@comcast.net">bwt.kellogg@comcast.net</a> |
|  |           | Newsletter     |                |  |
| Jerry                                  | Schmidt   | PR             | (503) 557-9653 |  |
|  |           | Revolving Art  |                |  |
| Shawn                                  | Van Doren | Website, Bios  | (503) 348-9265 | <a href="mailto:shawnuf@comcast.net">shawnuf@comcast.net</a>         |

## Revolving Art— Show your art

The Guild looks for opportunities to show our members' art. Contact us if you have a location where you would like us to show.

Please contact: Betty Kellogg at 503-659-8284 or [bwt.kellogg@comcast.net](mailto:bwt.kellogg@comcast.net)

Our members currently show regularly at the following locations:

- **Oak Lodge Water Services District**  
14496 SE River Rd, Oak Grove, OR 97267  
(14-16 paintings)
- **Gladstone DMV**  
10 82nd Dr, Gladstone, OR 97027  
(5 paintings)



Kate Mitchell

Please accept our heartfelt sympathy for any lost friends or loved ones during the current outbreak of COVID-19 virus, or for any reason. These losses are hard to bear, and we want you to know that you are in our hearts.