

NCAG is a 501.c.3 Non-Profit Dedicated to the appreciation and understanding of the arts, the encouragement of new artists, and promotion of art interests throughout the community. **Donations are tax deductible.**

Our goal is to provide a comfortable environment in which artists can learn and benefit from each other's skills, knowledge, and methods.

Welcome All

Attending our meetings is a great way to meet fellow artists – bring a painting or two for a friendly critique. Monthly demos are given by some of the best Portland area artists and make for a great learning experience!

Inside this issue:

<i>President's Message</i>	2
<i>Park location map</i>	2
<i>"Critique" photos</i>	3
<i>Contacts, Comfort Corner</i>	4
<i>Future meetings news</i>	5
<i>Revolving Art</i>	5
<i>Know Your Brushes by Barbara Seliner</i>	6

NEXT MEETING - 09/14/2021 - 11:00-2:30 - N.Clackamas Park

We are hoping for another bit of good weather to hold our September meeting in the park shelter. Be prepared for a cool day AND for a hot day. We'll see what shows up.

There is no food plan, so bring your own lunch if you think you will need it. The meeting will be a little shorter, because we will not have all of the donated items for review at the site of the meeting.



Clackamas Co. mask protocols **will** be in effect. **"Masks will be required statewide in most outdoor settings regardless of vaccination status."** Our group can also rely on distancing because there is room to spread out.

STILL AVAILABLE!

The plan files were sold at the August meeting. We accept cash or checks only. This easel is the largest item still available, but will be taken to SCRAP in early October if not spoken for. It is probably handmade. We will bring it to the September meeting. At the July & August meetings we received \$556.00 of donations for merchandise, from art books to mat board, the mat cutter, and some of the canvases and art papers. There are still a couple of plein aire (pochade) boxes, pads of paper, fine art watercolor paper, things like acetate sheets, charcoal papers, printing papers and cut mats. See you there? We have recovered our costs of processing the Thibideau gift.

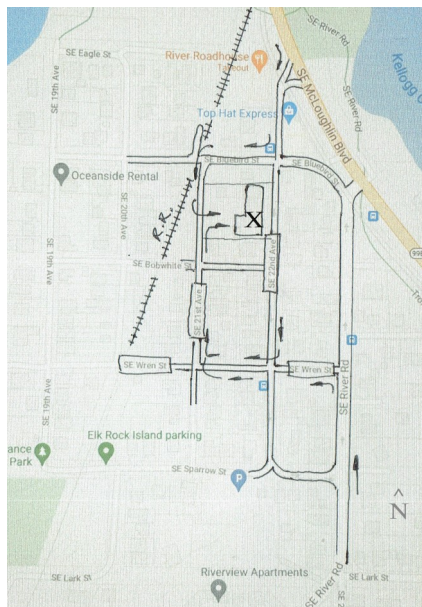




Betty Kellogg
NCAG President

President's Message

As I write this, I must start out with my sincerest thanks to those members who have helped in the search for a new meeting place. Connie, Char and Paul have really been heroes on the phone and behind the wheel to help check out buildings. With new COVID requirements under discussion, we reached agreement with the Milwaukie Grange Hall on SE 21st & SE Bluebird St. for our October 12 meeting. I encourage you to take a dry run, so you will be familiar with the access, off of SE River Road. A map is below.



X marks the spot. The Milwaukie Grange Hall is the spot of our October 12 meeting. The building address is 12015 SE 22nd Avenue, Milwaukie, 97222. It is very close to the junction of SE McLoughlin and SE River Road. Going South from downtown Milwaukie, turn off the River Road exit, then R on SE Bluebird or SE BobWhite, then R on SE 22nd, and the building is on your left. Or, going North on SE River Rd, turn L on SE Wren or SE BobWhite, and R on SE 22nd. Pull into the parking lot and leave space on the right side for parking head in, leaving room for those needing ramp access.

After Winslow Homer's "A Fair Wind", by Jerry Schmidt.



August! Map to the North Clackamas Community Park on Kellogg Road off of the Milwaukie Expressway and SE Rusk Road.



CRITIQUES!

Gary Michaels reviewed our work after our return to monthly meetings. Here he scans one of John Halverson's paintings.



Barbara Seliner

Sandie Jelinek



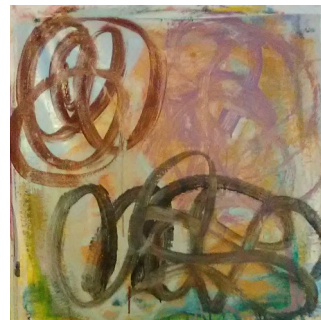
Kathy Conrad



Shirlee Lind



Betty Kellogg



Kathy Conrad



Jerry Schmidt

John Kellogg



Vona Adams-Lawrence



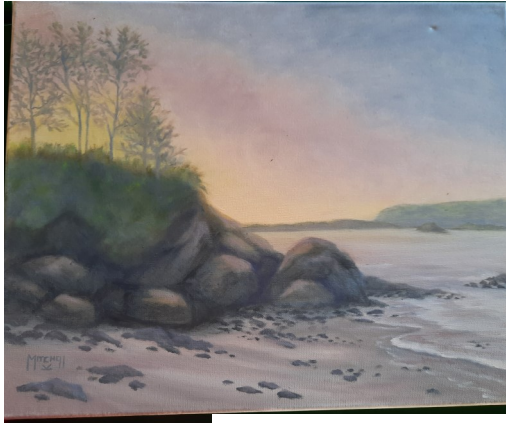
Vona Adams-Lawrence



Connie Emmons



Rita Townley



These two paintings are by our VP, Kate Mitchell, showing the use of color to create a mood or effect.

VOLUNTEERS NEEDED

We will need volunteers for September 14, the day of the meeting to help set up and take down, and some to help tidy up when we are done. We'll need a photographer during the critique sessions, which will be performed by Pam Davis.

Membership Options

Join or renew your membership online with PayPal or debit/credit card. As always also join at a meeting or send your payment to Treasurer , North Clackamas Arts Guild, PO Box 220004, Milwaukie OR. 97269-0004.

Revolving Art— Show your art

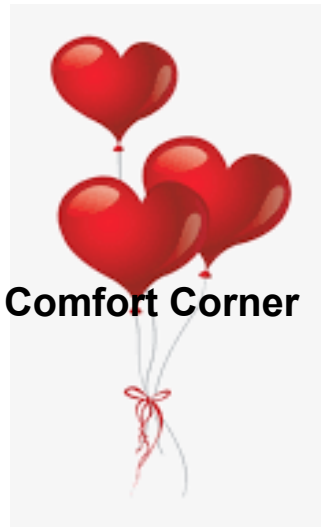
The Guild looks for opportunities to show our members' art. Contact us if you know of a location where you would like us to arrange a Guild show.

Please contact: Betty Kellogg at 503-659-8284 or bwt.kellogg@comcast.net

Our members currently show regularly at the following locations:

Oak Lodge Water Services District (14-16 paintings)

Gladstone DMV (5 paintings) **Space is available NOW**—Call Rita T. to get forms.



Comfort Corner

If you know of a member who's ailing or in need, please let us know. Contact Connie Emmons at 503-454-0447

NCAG Contact Information

Officers 2019-2020 April through March				
Betty	Kellogg	President	(503) 659-8284	bwt.kellogg@comcast.net
Kate	Mitchell	Vice President	(503) 894-3275	kpmitche17@gmail.com
Shawn	Van Doren	Secretary	(503) 348-9265	shawnuf@comcast.net
Paul	Boggs	Treasurer	(503) 659-0849	boggs3858@comcast.net
COMMITTEES				
		Advertising		VOLUNTEER NEEDED
Gary	Michael	Critique	(503) 659-9116	
Pam	Davis	Critique (Alt)	(971) 219-1962	
Char	Tritt	Demos	(971) 570-5782	
Sharon	Payne	Historian	(503)654-5613	
		Hospitality		
		Hospitality		
Liz	Flintjer	Membership	(503) 655-5762	
Betty	Kellogg	Newsletter	(503) 659-8284	bwt.kellogg@comcast.net
		Newsletter		VOLUNTEER NEEDED
Jerry	Schmidt	PR	(503) 557-9653	
		Revolving Art		VOLUNTEER NEEDED
Shawn	Van Doren	Website, Bios	(503) 348-9265	shawnuf@comcast.net



Please accept our heartfelt sympathy for any lost friends or loved ones during the current outbreak of COVID-19 virus, or for any reason. These losses are hard to bear, and we want you to know that you are in our hearts.



John Kellogg

PAINT 4 FUN IS BACK!

Bring out your easels and your traveling paints, we are going to test the waters of our outdoor painting skills and meet in the small covered shelter by the ball field at North Clackamas Park. There is a paved area with 4 picnic tables and benches, a restroom, and water.

If you would like to submit an article and photos for future newsletters, please advise one of your Board members.



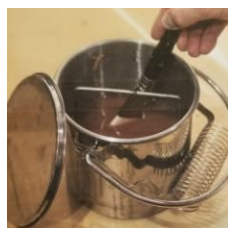
Types of brushes

Know your Brushes

--Seventh and Last in the Series-- by Barbara Seliner

Now that you know your brushes, learning how to care for them is essential. The golden rule when it comes to knowing how to clean your brushes is...keep them wet while in use and give them a good cleaning when they're not, but cleaning your brushes is easier said than done. There are some techniques you need to know if you're going to get the paint out effectively and extend the life of your brushes.

How to clean your paint brushes properly depends on the kind of paint you're using. I'll first discuss the main process and then explain the different brush care variations for different mediums. Let's start with **CLEANING OIL PAINT BRUSHES** as there are more steps, but it's still a fairly simple process. **FIRST**, remove as much paint from the bristles as possible by folding a clean cloth or paper towel around the ferrule of the brush (the bit just below the bristles) and wipe upwards always moving the cloth from the ferrule to the end of the bristles. You don't want paint to get into the ferrule as it will ruin the brush. **SECONDLY**, ditch the white spirits! There are much better and safer alternatives, both for the user and the environment, for this use "Bartoline Clean Spirits" just as you would traditional white spirits, but please **DON'T** pour it down the drain afterwards. Take it to your local recycling center, or even better, recycle it yourself. Decant the dirty 'wash' spirits into an empty clean spirit container and over time the pigment sinks to the bottom leaving reusable clean spirit above. The best solution for cleaning oil brushes is pure oil itself, but it takes a bit more work. Linseed oil dries quicker than other oils, so a better alternative is walnut oil or safflower oil. Use your spirits or oil, in a "metal brush washer" something like the one pictured here. These make light work of



brush-cleaning and are a great investment. Fill the "washer" up with your chosen spirits or oil. Hold your brush almost vertically, gently swishing your bristles back and forth across the perforated metal insert submerged, that will knock off any pigment still on the bristles without swirling up the sediment at the bottom of the washer.

NEXT, use a paintbrush cleaning soap such as "The Master's Brush Cleaner and Preserver." Using a little water, work up a lather with your brush in the center of the soap. Work the lather through the bristles with your thumb and forefingers, always working from the ferrule out towards the ends of the bristles. Continue till no pigment can be seen in the lather. **FINALLY**, Rinse in clean water, reshape bristles with your fingers and allow to dry in a holder or pot.



CLEANING ACRYLIC BRUSHES is like the above, but instead of using spirits or oils, you just use water.

CLEANING WATERCOLOR BRUSHES is more delicate. Instead of cleaning with a cloth or towel, keep a cup of water close, swirling the brushes between applying the different colors of paint to the paper. **DO NOT EVER** let a watercolor brush stand up in the cup with the head down. It can break the bristles so they are not usable, or the water will get under the ferrule, swell the wooden handle, loosen the bristles and they fall out. After you are done painting for the day, go to a sink, put a dab of hand soap in the palm on your hand, swirl the tip of the brush around in it, turn the faucet on, hold the tip of the brush horizontally under the full force of the water but not touching the sink. When the water runs clean, turn off the water, give your brush a quick downward shake to reshape the bristles, then allow it to dry, lay it on the table not allowing the tip to touch anything, or balance it across your empty water cup. If you are using natural hair watercolor brushes there is one more step. Once in a while, when you notice your bristles are not holding their shape, use the brush cleaner in the same matter described above to replenish the lost oils in the natural hairs of the bristles before setting your brush to dry.

