

**NCAG** is a 501.c.3 Non-Profit Dedicated to the appreciation and understanding of the arts, the encouragement of new artists, and promotion of art interests throughout the community. **Donations are tax deductible.**

Our goal is to provide a comfortable environment in which artists can learn and benefit from each other's skills, knowledge, and methods.

**NEXT MEETING - August 10, 2021 - 10:30-2:30 - N Clack. Pk**

Plan to be there! We will try to go back to our old arrangement of having food—nothing fancy, just pizza, and bottled water. We do not have anyone to care for the food or disposal of waste items. This is not a potluck.

Gary has confirmed he will be available to give us critiques of our recent artworks. We had some interesting paintings presented, and are looking forward to more!



### Welcome All

Attending our meetings is a great way to meet fellow artists – bring a painting or two for a friendly critique. Monthly demos are given by some of the best Portland area artists and make for a great learning experience!

#### Inside this issue:

<i>President's Message</i>	2
<i>Park location map</i>	2
<i>"Critique" photos</i>	3
<i>Contacts, Comfort Corner</i>	4
<i>Future meetings news</i>	5
<i>Revolving Art</i>	5
<i>Know Your Brushes by Barbara Seliner</i>	6

### STILL FOR SALE!

These plan files are still available at the August meeting. There will be a Silent Auction, and you can bid as many times as you like. The bidding will be closed at 3:00pm, at the meeting. We will accept cash or checks only. Contents sold separately.



At the July meeting we sold around \$150.00 of merchandise, from art books to mat board, the mat cutter, and some of the canvases and art papers. There are still a couple of plein aire (pochade) boxes, pads of paper, fine art watercolor paper, a shoebox of crayons, a box of pastels, and other stuff like acetate sheets, charcoal papers, printing papers and cut mats. See you there?



Betty Kellogg  
NCAG President

**Workshops are so inspirational, truly a great value and learning resource. Access to other artists and differing views expands our thinking!**

## President's Message

Thanks to everyone, all 20 of you, who came to our July meeting. It was great fun to see familiar faces, and catch up on the news. There was a lot of interest in the supplies we had out for sale, but be assured there are many more supplies to be presented at the August 10 meeting. We aren't prepared to take credit or debit cards, so bring cash or your checkbook. Leftovers to be donated to SCRAP.

Jerry put out some new signs directing people to us. They look fresh and worth the work he put into them. We had two guests representing Brush and Palette, with a suggestion we might be interested in using their meeting space for our meetings in future. Checking it out!

On another note—please call me if you are willing to put your name in the hat for one of the open officer positions: President, Vice President & Secretary. Betty Kellogg



Here's a map to the North Clackamas Community Park, on Kellogg Rd off of the Milwaukie Expressway and SE Rusk Road. This shelter is just across from the Milwaukie Senior Center.



## VOLUNTEERS NEEDED

We will need volunteers for August 10, the day of the meeting to help set up and take down, and some to help tidy up when we are done. We need someone to assist Paul in keeping track of our merchandise and sale, help Jerry with the transportation to the park and back to the storage unit. We'll need a photographer during the critique sessions. Before the meeting we will need to help Liz with a phone tree to be sure everyone gets the news. Phone numbers are on Page 4 of this newsletter.





Lee Marletto



Lee Marletto



Kathy Conrad



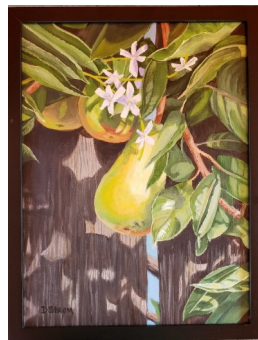
Barbara Seliner



Barbara Seliner



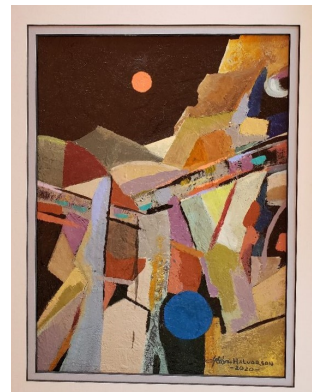
Rita Townley



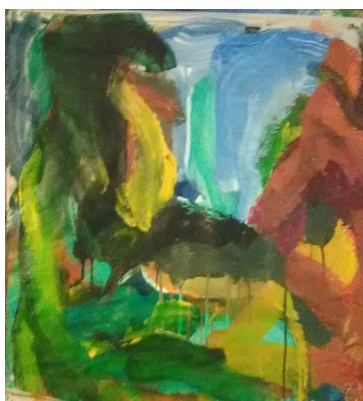
Diana Strom



John Halverson



John Halverson



John Kellogg



Paul Boggs



John Halverson

## ***Membership Options***

Join or renew your membership online with PayPal or debit/credit card. As always also join at a meeting or send your payment to Treasurer, North Clackamas Arts Guild, PO Box 220004, Milwaukie OR. 97269-0004.

### **September Meeting Location still Unresolved.**

The location of September 's meeting is still unresolved. We have been offered space at the Brush and Palette building, but will require us to meet on Wednesdays or other day of the week, but Tuesdays are the day they have committed to their group. Please respond to either Shawn or Betty K. ,if you have preferences. We still have access to the Water District building in Oak Lodge, and have just heard from the Milwaukie Senior Center about a meeting room inside the building. We may have a room inside on Wednesdays, following the Wood Cutters group, who have the space from 8:00 to 11:30am. So far so good. Please stay in touch, and watch for notices.



## **Revolving Art— Show your art**

The Guild looks for opportunities to show our members' art. Contact us if you have a location where you would like us to arrange a Guild show.

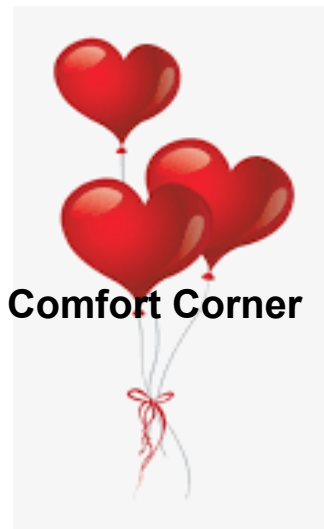
Please contact: Betty Kellogg at 503-659-8284 or [bwt.kellogg@comcast.net](mailto:bwt.kellogg@comcast.net)

Our members currently show regularly at the following locations:

**Oak Lodge Water Services District** (14-16 paintings)

**Gladstone DMV (5 paintings) Space is available NOW**—Call Betty K to get forms.

*If you would like to submit an article and photos for future newsletters, please advise one of your Board members.*



**Comfort Corner**

If you know of a member who's ailing or in need, please let us know. Contact Connie Emmons at 503-454-0447

# NCAG Contact Information

Officers 2019-2020 April through March				
Betty	Kellogg	President	(503) 659-8284	<a href="mailto:bwt.kellogg@comcast.net">bwt.kellogg@comcast.net</a>
Kate	Mitchell	Vice President	(503) 894-3275	<a href="mailto:kpmitchell7@gmail.com">kpmitchell7@gmail.com</a>
Shawn	Van Doren	Secretary	(503) 348-9265	<a href="mailto:shawnuf@comcast.net">shawnuf@comcast.net</a>
Paul	Boggs	Treasurer	(503) 659-0849	<a href="mailto:boggs3858@comcast.net">boggs3858@comcast.net</a>
COMMITTEES				
		Advertising		VOLUNTEER NEEDED
Gary	Michael	Critique	(503) 659-9116	
Pam	Davis	Critique (Alt)	(971) 219-1962	
Char	Tritt	Demos	(971) 570-5782	
Sharon	Payne	Historian	(503)654-5613	
		Hospitality		
		Hospitality		
Liz	Flintjer	Membership	(503) 655-5762	
Betty	Kellogg	Newsletter	(503) 659-8284	<a href="mailto:bwt.kellogg@comcast.net">bwt.kellogg@comcast.net</a>
		Newsletter		VOLUNTEER NEEDED
Jerry	Schmidt	PR	(503) 557-9653	
		Revolving Art		VOLUNTEER NEEDED
Shawn	Van Doren	Website, Bios	(503) 348-9265	<a href="mailto:shawnuf@comcast.net">shawnuf@comcast.net</a>



Please accept our heartfelt sympathy for any lost friends or loved ones during the current outbreak of COVID-19 virus, or for any reason. These losses are hard to bear, and we want you to know that you are in our hearts.

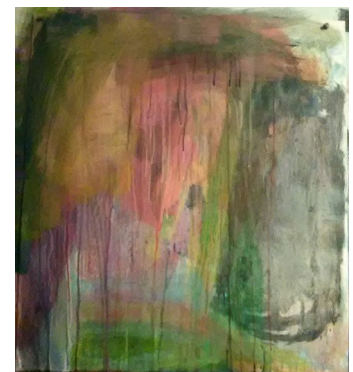


**John Halvorson**



## PAINT 4 FUN IS BACK!

Bring out your easels and your traveling paints, we are going to test the waters of our outdoor painting skills and meet in the small covered shelter by the ball field at North Clackamas Park. There is a paved area with 4 picnic tables and benches, a restroom, and water.



**John Kellogg**

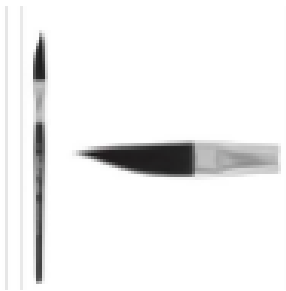




Types of brushes

## Know Your Brushes

--Seventh in the Series— by Barbara Seliner



The DAGGER or SWORD brush looks like an angle brush with longish hairs and used for one stroke painting. You can use them to make straight lines with more control.

They also hold more water and pigment than a liner brush since they have a fuller belly. Due to the unusually shaped brush, it allows the artist to make expressive marks that are harder to create in any other way. The tiny tips can also make fine lines like grass and eyelashes, but the fun comes with the DAGGER'S capacity for a whole range of breadths of marks and stroke directions that the DAGGER/SWORD is capable of making. Due to the brush shape and construction, none of the marks is fully under your control, which make them fresh, varied, and unpredictable. Here are some effects you can create:

