

**NCAG** is a 501.c.3 Non-Profit Dedicated to the appreciation and understanding of the arts, the encouragement of new artists, and promotion of art interests throughout the community. **Donations are tax deductible.**

Our goal is to provide a comfortable environment in which artists can learn and benefit from each other's skills, knowledge, and methods.

**Multnomah County Fair Winner!**

On May 29-30, NCAG member Sherry Joiner brought home three ribbons from the Modified Multnomah County Fair for the Memorial Weekend's theme, FOR ALL THOSE WHO SERVE. Her other two ribbons were for her portraits of Stacey Abrams and Nancy Pilosi which were featured in our January newsletter.



**Welcome All**

Attending our meetings is a great way to meet fellow artists – bring a painting or two for a friendly critique. Monthly demos are given by some of the best Portland area artists and make for a great learning experience!

Inside this issue:

<i>President's Message</i>	2
<i>Park location map</i>	2
<i>"Critique" photos</i>	3
<i>Self-Marketing article by Kathy Conrad</i>	4
<i>Contacts, Comfort Corner</i>	5
<i>Revolving Art</i>	4
<i>Know Your Brushes by Barbara Seliner</i>	6

**RESERVE THE DATE - JULY 13, 2021 - 10:30-2:30 - N Clack. Pk**

That is the date of our 2021 re-opening!! We normally have our summer picnic meeting at the park and this will be just right! The church won't be available to us until September at the soonest, so the August 10 meeting will be in the park as well.

Come prepared for CRITIQUES. Gary Michael has agreed to give us the benefit of his knowledge to review what we have been working on over the pandemic stoppage. We will also bring some of the art supplies and papers, donated to the Guild by the Estate of Ed Thibodeau last spring, for sale to members.

The parks department has asked us to observe the current OHA guidelines regarding the shelter capacity of 50, and distancing. They would like us to wear masks, but can't enforce it, so they leave it up to our judgement. We can vote on it at the meeting, so be prepared to wear one in case it falls that way. The Board will provide bottled water for the meeting. It is advised that everyone take care of their food needs—BYOB (Bag, that is). We are still working on the details. [SALE STARTS AT 10:30 AM](#)



Betty Kellogg  
NCAG President

## President's Message

Hello again! I am looking forward to seeing all of your faces soon at our 7/13 meeting! My plan is to defer most of our "old Business: until the 8/10 meeting, which will also be held at the park. Gary has confirmed his availability for critiques, so don't forget to bring your paintings.

The agenda for August includes the matter of elections. Please consider your contribution to the continuing management of the Guild, and your place in the flow of events. We have just been through an extraordinary time, and the current Board has held the fort for almost 3 years. Anyone with interest in serving as a Board officer or President, please call me.

Personally, I have been proud to serve as your President, and will continue to serve the Guild in other ways in the future. I have had great support from our Board members and former officers, and it is time for a change.

Thanks again for allowing me to be Guild President, and getting to know you.

Betty Kellogg

**Workshops are so inspirational, truly a great value and learning resource. Access to other artists and differing views expands our thinking**



Here's a map to the North Clackamas Community Park, on Kellogg Rd off of the Milwaukie Expressway and SE Rusk Road. This shelter is just across from the Milwaukie Senior Center.



### VOLUNTEERS NEEDED

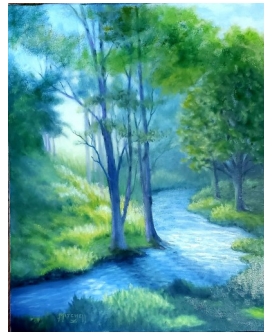
We will need volunteers for July 13, the day of the meeting to help set up and take down, and some to help tidy up when we are done. We need someone to assist Paul in keeping track of our merchandise and sale, help Jerry with the transportation to the park and back to the storage unit. We'll need a photographer during the critique sessions. Before the meeting we will need help Liz with a phone tree to be sure everyone gets the news. Phone numbers are on Page 4 of this newsletter.



Kathy Conrad



Kate Mitchell



Kate Mitchell



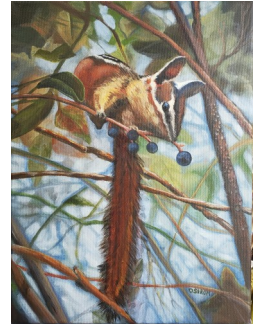
Kate Mitchell



Kathy Conrad



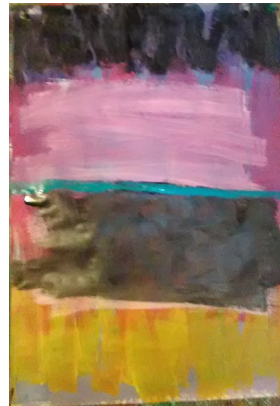
Shirlee Lind



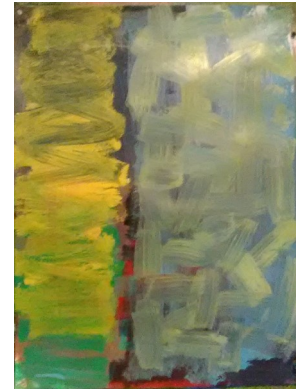
Diana Strom



Shirlee Lind



John Kellogg



John Kellogg



Kathy Conrad

## Membership Options

Join or renew your membership online with PayPal or debit/credit card. As always also join at a meeting or send your payment to Treasurer at North Clackamas Arts Guild, PO Box 220004, Milwaukie OR. 97269-0004.

## MARKETING YOUR ARTWORK — by Kathy Conrad

Every photo of your artwork is a great marketing tool as they each can be electronically shared on social media, on a website, in emails, on your business card or in publications.

While a high-resolution camera is best for photographing artwork, a cell phone has the capabilities of producing good images.

Cameras and cell phones come equipped with internal photo editing programs. Additionally, photo editing software and online services can be purchased or subscribed to. Free, online tutorials are available as well. Adjust any misalignments, and crop away any unwanted parts of the background before submitting your photos.

### **The following tips will help you take better cell phone photos of your artwork:**

You must have natural lighting to photograph art with a cell phone

- Never use backlight. Always have light bouncing off the front of your art. Light coming from behind or from the sides will wipe out all of your colors and contrast.
- Cloudy days or early mornings are best for lighting. If you are trying to shoot outside or use light from windows to capture natural light, but you end up with harsh light and shadows, you may need to wait for a cloudy day.
- If you can't wait for a cloudy day, try shooting indoors by hanging white sheets over the windows to diffuse the light. Bounce strong light back onto the painting with white foam board to get more even distribution.
- Make sure the lens of your cell phone camera is clean.
- Use your artist's eye to focus and square up your image, then snap the photo - take several.



## **Revolving Art— Show your art**

The Guild looks for opportunities to show our members' art. Contact us if you have a location where you would like us to arrange a Guild show.

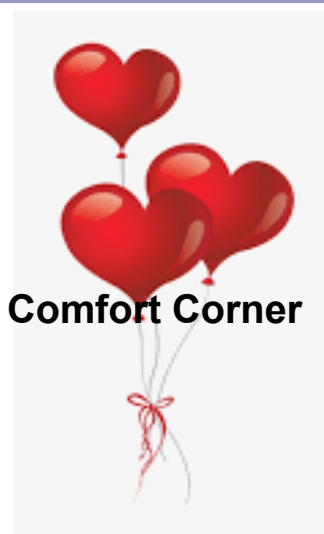
Please contact: Betty Kellogg at 503-659-8284 or [bwt.kellogg@comcast.net](mailto:bwt.kellogg@comcast.net)

Our members currently show regularly at the following locations:

**Oak Lodge Water Services District** (14-16 paintings)

**Gladstone DMV (5 paintings)** ***Space is available in June***—Call Betty K to get forms.

*If you would like to submit an article and photos for future newsletters, please advise one of your Board members.*



**Comfort Corner**

If you know of a member who's ailing or in need, please let us know. Contact Connie Emmons at 503-454-0447

# NCAG Contact Information

Officers 2019-2020 April through March				
Betty	Kellogg	President	(503) 659-8284	<a href="mailto:bwt.kellogg@comcast.net">bwt.kellogg@comcast.net</a>
Kate	Mitchell	Vice President	(503) 894-3275	<a href="mailto:kpmitche17@gmail.com">kpmitche17@gmail.com</a>
Shawn	Van Doren	Secretary	(503) 348-9265	<a href="mailto:shawnuf@comcast.net">shawnuf@comcast.net</a>
Paul	Boggs	Treasurer	(503) 659-0849	<a href="mailto:boggs3858@comcast.net">boggs3858@comcast.net</a>
COMMITTEES				
		Advertising		VOLUNTEER NEEDED
Gary	Michael	Critique	(503) 659-9116	
Pam	Davis	Critique (Alt)	(971) 219-1962	
Char	Tritt	Demos	(971) 570-5782	
Sharon	Payne	Historian	(503)654-5613	
		Hospitality		
		Hospitality		
Liz	Flintjer	Membership	(503) 655-5762	
Betty	Kellogg	Newsletter	(503) 659-8284	<a href="mailto:bwt.kellogg@comcast.net">bwt.kellogg@comcast.net</a>
		Newsletter		VOLUNTEER NEEDED
Jerry	Schmidt	PR	(503) 557-9653	
		Revolving Art		VOLUNTEER NEEDED
Shawn	Van Doren	Website, Bios	(503) 348-9265	<a href="mailto:shawnuf@comcast.net">shawnuf@comcast.net</a>



Please accept our heartfelt sympathy for any lost friends or loved ones during the current outbreak of COVID-19 virus, or for any reason. These losses are hard to bear, and we want you to know that you are in our hearts.

Kathy Conrad



## PAINT 4 FUN IS BACK!

Bring out your easels and your traveling paints, we are going to test the waters of our outdoor painting skills and meet in the small covered shelter by the ball field at North Clackamas Park. There is a paved area with 4 picnic tables and benches, a restroom, and water.

Shirlee Lind



Types of brushes

## Know Your Brushes

--Fifth in the Series— by Barbara Seliner

Another specialty brush is the MOP.



You might be looking at this and wondering what is the difference between a mop and a round? Not much..MOPS generally tend to have a bigger belly and don't have a sharp tip. The point of the MOP is to get a ton of water on your paper quickly, just like a MOP. A beginner probably doesn't need one, although it makes life a lot easier. You can just use a large brush for the same purpose. However, if you hate dipping into your water glass over and over again just to wet down a piece of paper, you will love a MOP.



A RIGGER, also called a liner or script, is a thin brush with extremely long bristles. It does take practice, but the long bristles allow you to paint long, thin, tiny lines even if your hand is a bit shaky. Many call it a RIGGER because they work well to draw in the rigging on maritime sailing ships. RIGGERS are also often useful painting grasses, trees and other long thin lines, as well as, lettering.